



11 Widford Chase, Chelmsford, CM2 8SZ

£140,000

*** NO ONWARD CHAIN *** A well presented and modernised ONE BEDROOM FIRST FLOOR maisonette with it's own GARDEN AREA. The accommodation includes: ENTRANCE HALL WITH STAIRS TO FIRST FLOOR LANDING, LOUNGE, KITCHEN/BREAKFAST ROOM, BEDROOM AND RECENTLY REFITTED SHOWER ROOM. The property has gas radiator heating and upvc double glazed windows.

LEASEHOLD INFORMATION

THE 125 YEAR LEASE IS FROM 27TH NOVEMBER, 2000 WITH CIRCA 99 YEARS REMAINING. MANAGEMENT COMPANY IS CHELMEY HOUSING PARTNERSHIP AND THE MONTHLY SERVICE CHARGE/MAINTENANCE PAYMENT IS APPROXIMATELY £35.00 WHICH ALSO INCLUDES BUILDINGS INSURANCE. THERE IS AN ANNUAL GROUND RENT OF £10.00

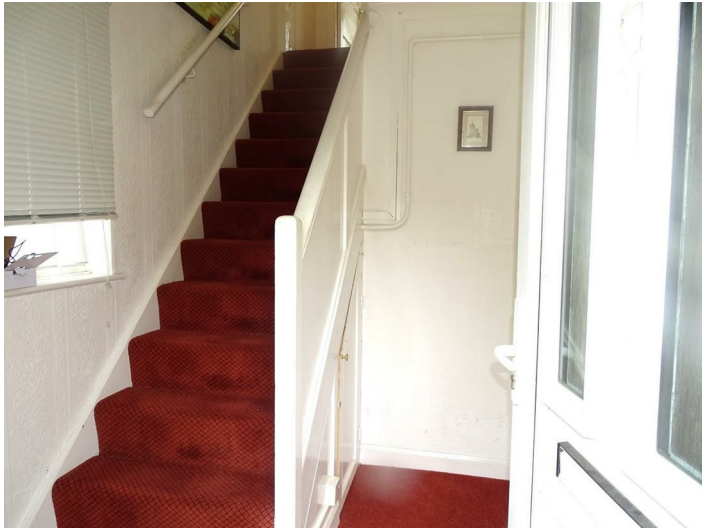
LOCALITY INFORMATION

The property offers easy access to the city centre, A12 & A414. There are a shops and schools in close proximity and various retail parks. Chelmsford Golf Club is situated off Widford Road.

ACCOMMODATION COMPRISES

Entrance door to hall.

ENTRANCE HALL



Stairs to first floor landing, under stair cupboard, radiator, upvc double glazed window to side.

LANDING

Access to roof space, built in storage cupboard, upvc double glazed window to side, doors to all rooms.

LOUNGE 12'2 x 11'2 (3.71m x 3.40m)



Radiator, two upvc double glazed windows to front, fitted drawer unit to alcove with cupboards above.

REVERSE VIEW



KITCHEN/BREAKFAST ROOM 14'4 x 9'2 (4.37m x 2.79m)



A very well appointed room with plenty of worktop space, ample drawers and cupboards below, wall mounted cupboards, tall larder cupboard, built in storage cupboard, two upvc double glazed windows to rear.

FURTHER VIEW



ADDITIONAL VIEW



BEDROOM 9'2 maximum x 7'6 (2.79m maximum x 2.29m)



Radiator, upvc double glazed window to front, deep recess used for hanging space or a wardrobe could be fitted if preferred., deep over stair storage cupboard which houses the Ideal gas boiler.

HANGING/WARDROBE SPACE



FRONT GARDEN



RECENTLY REFITTED SHOWER ROOM



White suite comprising low level wc, pedestal wash hand basin, walk in double width shower unit, radiator, fully tiled walls, frosted upvc double glazed window to rear.

There is a small lawned front garden area to the left hand side with side access to leading through to the rear.

OWN REAR GARDEN AREA



A lawned area to the lower garden.

PARKING

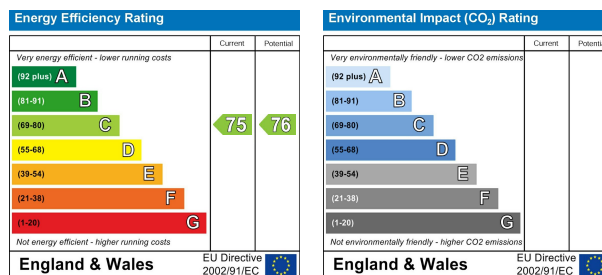
There is parking to the road.

First Floor

Ground Floor



Total area: approx. 45.8 sq. metres (493.2 sq. feet)



DISCLAIMER: You may download, store and use the material for your own personal use and research. You may not republish, retransmit, redistribute or otherwise make the material available to any party or make the same available on any website, online service or bulletin board of your own or of any other party or make the same available in hard copy or in any other media without the website owner's express prior written consent. At Leonard Gray, we aim to ensure our sales particulars are accurate and reliable. However, they do not constitute any offer or contract, nor are they to be taken as statements or representations of fact. No tests have been carried out by us in respect of services, systems or appliances contained in the specification. No guarantee as to their operating ability or efficiency is given. All measurements are a guide only and, therefore, are not necessarily precise. Fixtures and fittings, apart from those mentioned in the particulars, are to be agreed with the seller. Some particulars, please note, may also be awaiting the seller's approval. If clarification or further information is required, please contact us.